

# The Preserve at Spring Creek

30 ACRE MIXED USE DEVELOPMENT

A Joint Venture Between:



## Development Highlights

A 30 Acre 150,000 SF Development across from Governor's Square Mall on Wilma Rudolph Boulevard in Clarksville, TN.

Adjacent to Hampton Plaze which includes

- Kohl's
- Books a Million
- Red Lobster and more

## Traffic Counts

30,860 vehicles per day - Wilma Rudolph Blvd, Clarkville, TN (2008)

## Demographics

3 miles 5 miles

2008 Population Projections	15,502	48,455
2008 Avg. HH Income	\$59,477	\$56,708
2008 Projection of HH	8,595	26,760

### Contact:

Jeff Browning	Eakin Partners
Browning Development Solutions	1600 Division Street
PO Box 2725	Suite 600
Brentwood, TN 37024	Nashville, TN 37203
615-376-8844	605-250-1800
jeff@browningds.com	



MIXED USE



Jeff Browning  
jeff@browningds.com

Mike McGuffin  
mmcguffin@eakinpartners.com

w w w . b r o w n i n g d s . c o m

# The Preserve at Spring Creek

CLARKSVILLE, TENNESSEE

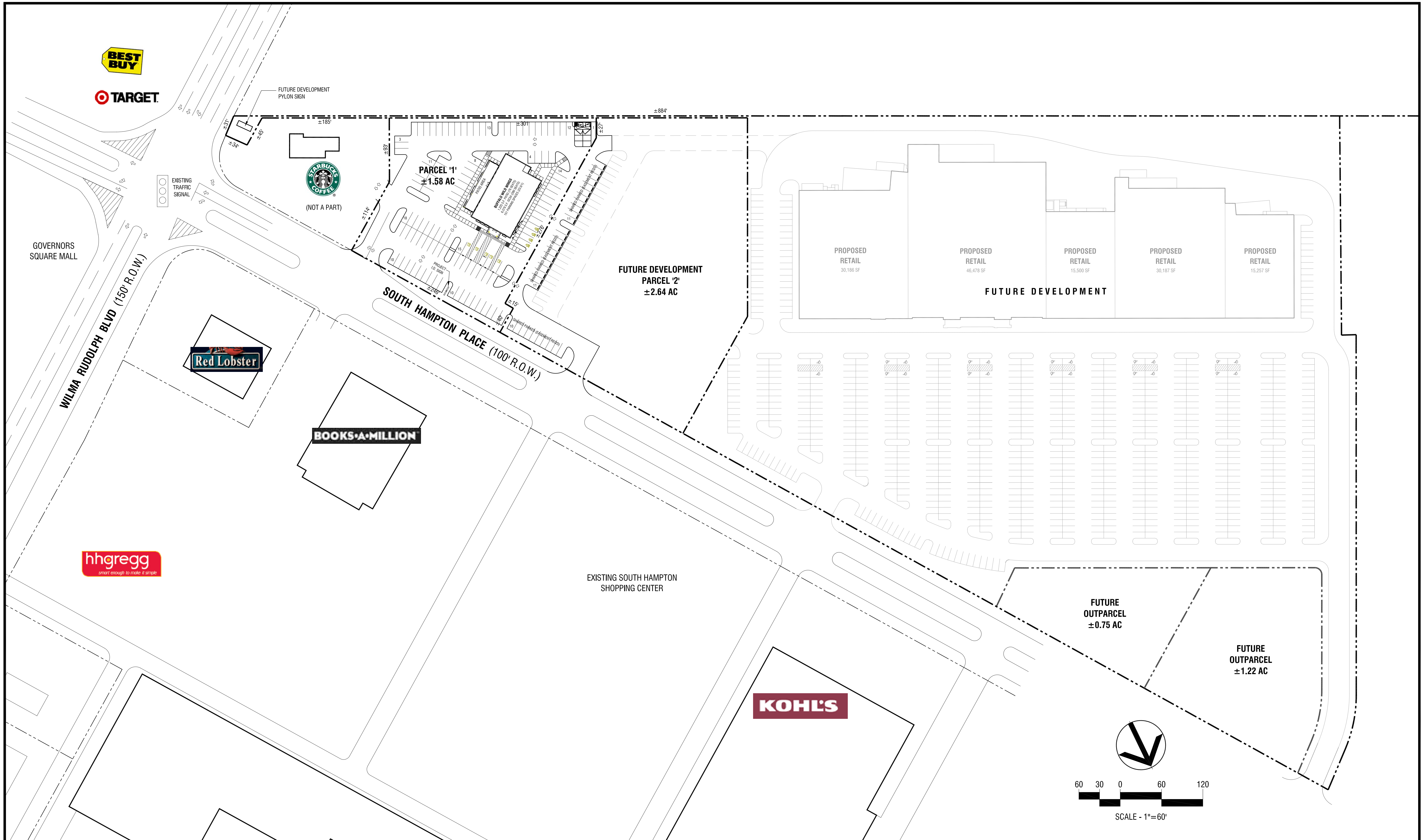


Gateway Medical Center

A Joint Venture Development



© Aerials Express © 2009, Navteq © 2009, Microsoft



Prepared By



**Development Management Group, LLC**

4209 GALLATIN PIKE  
NASHVILLE, TN 37216  
TEL: 615-227-5863; FAX: 615-227-5866

Prepared For



**BROWNING companies**

2601 WESTWOOD DRIVE  
NASHVILLE, TN 37204 - (615)376-8844



**EAKIN PARTNERS**  
COMMERCIAL REAL ESTATE  
ROUNDBOUT PLAZA - 1600 DIVISION ST - SUITE 600  
NASHVILLE, TN 37203 (615) 250-1800



*The Preserve*  
AT SPRING CREEK

WILMA RUDOLPH BLVD. - CLARKSVILLE, TN

SCALE:	1"=60'	<b>PRELIMINARY SITE PLAN</b>
DATE:	06-17-10	
REV:	08-06-10	
DMG Project No:	09152	
1 of 1		

Z:\PROJECTS\CLARKSVILLE\09152\09152.dwg - Browning\Staff\Ch Wilma Rudolph - Clarksville, TN\09152.dwg, 11/23/2010 2:28:37 PM